

33 S. Second Avenue  
Yakima, WA 98902  
www.esd105.org  
509-575-2885



### Our School Districts:

**Bickleton** (166 students)

**Cle Elum-Roslyn**  
(922 students)

**Damman** (Ellensburg)  
(39 students - K-5)

**East Valley** (Yakima)  
(3,277 students)

**Easton** (103 students)

**Ellensburg** (3,370 students)

**Goldendale** (973 students)

**Grandview** (3,370 students)

**Granger** (1,470 students)

**Highland** (Coviche)  
(1,142 students)

**Kittitas** (699 students)

**Mabton** (873 students)

**Mt. Adams** (White Swan)  
(898 students)

**Naches Valley**  
(1,334 students)

**Royal** (1,749 students)

**Selah** (3,732 students)

**Sunnyside** (6,910 students)

**Thorp** (186 students)

**Toppenish** (4,667 students)

**Union Gap**  
(624 students - P-8)

**Wahluke** (Mattawa)  
(2,409 students)

**Wapato** (3,363 students)

**West Valley** (Yakima)  
(5,536 students)

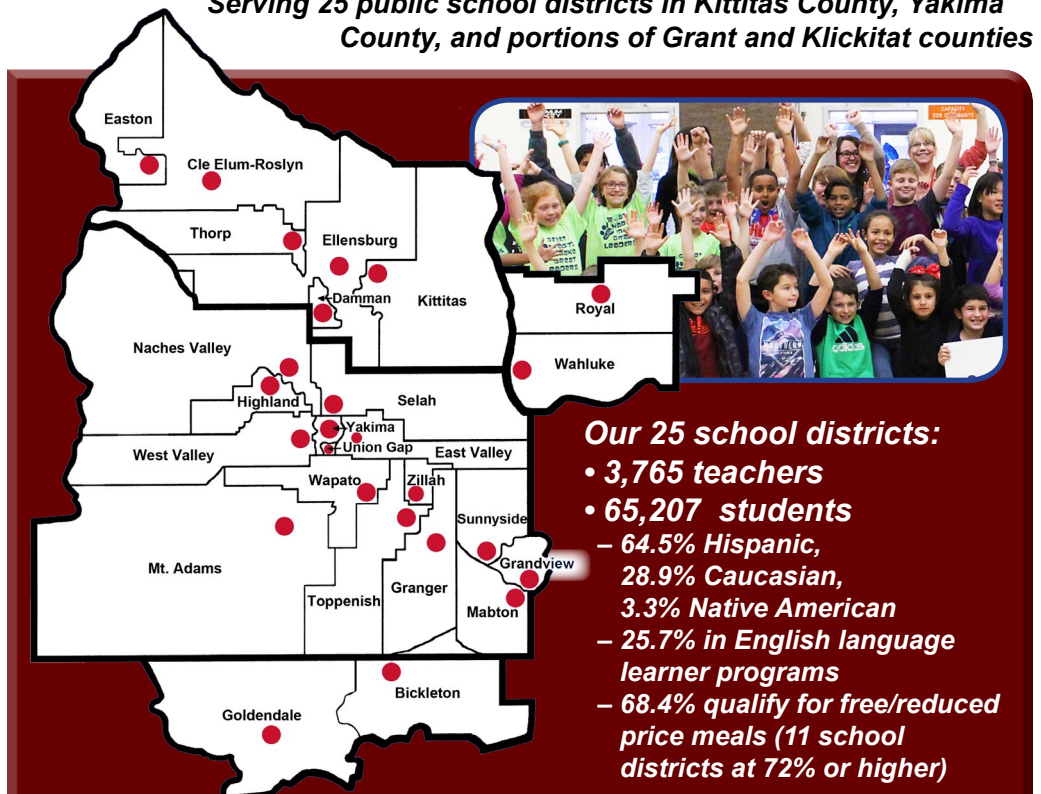
**Yakima** (15,974 students)

**Zillah** (1,309 students)

Enrollments from counts reported  
to OSPI during 2017-2018

# The 105 Region: An overview

Serving 25 public school districts in Kittitas County, Yakima County, and portions of Grant and Klickitat counties



### Our 25 school districts:

- 3,765 teachers
- 65,207 students
  - 64.5% Hispanic,
  - 28.9% Caucasian,
  - 3.3% Native American
  - 25.7% in English language learner programs
  - 68.4% qualify for free/reduced price meals (11 school districts at 72% or higher)

### Our 23 state-approved private and tribal schools:

- 204 teachers
- 2,169 students



Learn more about each school district's student and teacher demographics, financial data, and state test results by using OSPI's online resources at:  
<https://washingtonstatereportcard.ospi.k12.wa.us/>.



### Higher learning in our region:

- Central Washington University (Ellensburg)
- Heritage University (Toppenish)
- Pacific NW University of Health Sciences (Yakima)
- Perry Technical Institute (Yakima)
- Yakima Valley Community College (Yakima)



Kevin Chase, ESD 105 Superintendent